

Features

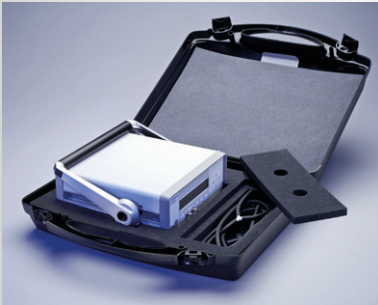
- Highly accurate and reproducible results
- Internal pressure generation using pressure bellows and hand pump
- Very rugged and light: excellent for service applications
- Unit conversion, e.g. mmHg/kPa, mbar/kPa
- Rechargeable battery allows for portable operation
- 90-264 V AC plug-in power supply

Measurement accuracy ¹⁾	± 0.2 % FS + ± 1 digit measurement ranges 1..50 kPa ± 0.5 % FS + ± 1 digit
Hysteresis	0.1 % FS
Temperature coefficient zero point	± 0% FS/°C (manual zero-point correction)
Temperature coefficient span	max. 0.04 % FS/K
Calibration temperature	22 °C ± 4%
Medium	air, all non-aggressive and non-flammable gases
Displacement volume	approx. 100 cm ³ (measuring ranges > 100 Pa) approx. 200 cm ³ (measuring range 100 Pa)
Output signal	0..1 V (R _L ≥ 2 kΩ) 2 connectors Ø 4 mm
Display	4 ½ digit LCD character height = 10 mm
Time constants	toggles between 0.1 s; 1 s
Operating temperature	10..40 °C
Storage temperature	-10..70 °C
Power supply	Ni-MH rechargeable 9 V battery with AC adaptor
Weight	approx. 3000 g
Pressure ports	for tubing NW 6 mm
Certificates	CE/UKCA

¹⁾ Measurement accuracy of the reference 0.3 Pa for measuring ranges ≤ ± 1.5 kPa

Order code	A	B	C
KAL 84			
Measurement ranges²⁾	A		
0..100 Pa (0..1 mbar)	0		
0..1 kPa (0..10 mbar)	1		
0..10 kPa (0..100 mbar)	10		
0..100 kPa (0..1 000 mbar)	100		
0..300 mmHg (0..400 mbar)	300		
²⁾ others available upon request			
Measurement accuracy	B		
± 0.5 % FS ± 1 digit	1		
± 0.2 % FS ± 1 digit for measurement ranges 1..50 kPa (optional)	2		
Calibration certificate	C		
none	0		
Factory calibration	I		
Calibration according to DKD-R 6-1	D		

Accessories



Transport case KAL 100/200
Order no. 9220.0002



Carrying bag KAL 100/200
supplied as standard



Carrying bag KAL 84
Order no. 9062.0001



Hand pump KAL 84
Order no. 9601.0036

Application software for the KAL 100 / 200

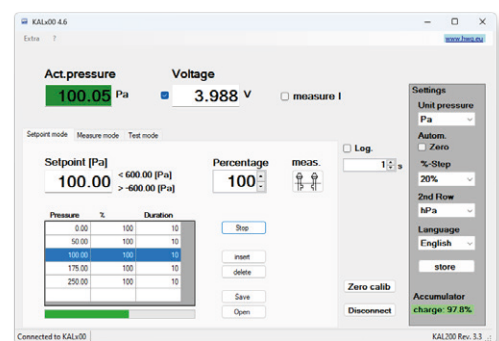
Control your calibration process from the PC. The calibration devices KAL 100/200 with USB connection can be operated with our user software. You can choose between the following operating modes: setpoint mode, pressure measurement and test mode.

You can define calibration points and approach them automatically. Save a calibration sequence once defined and use it again for another or the same pressure transmitter.

Use the software to conveniently set parameters that you would otherwise set via the operating menu of the display (unit, language (English/French/German/Italian/Spanish), zeroing,...).

You can find the free user software at:

www.halstrup-walcher.de/en/downloads



To place your order, please call us at **+49 7661 3963-0** or email us at info@halstrup-walcher.com.

For additional contacts, please visit www.halstrup-walcher.de/en/contact